

Te Totara Primary School  
PO Box 28134  
Rotoruna, Hamilton 3256

31 Hector Drive  
Rotoruna North, Hamilton 3210  
Ph: (07) 853-0039  
[www.tetotara.school.nz](http://www.tetotara.school.nz)  
[principal@tetotara.school.nz](mailto:principal@tetotara.school.nz)



# SCHOOL NEWSLETTER

## THURSDAY 8th AUGUST, 2013

### WEEK 2

**Kia Ora** (Maori/NZ), **Hello** (English), **Bula** (Fijian), **Welkom** (South African), **Huān yíng** (Chinese-Mandarin)  
**Ayubowan, Vanakkam** (Sri Lankan), **Namaste** (India), **Bem-vindos** (Brazil), **Marhaba** (Arabic), **Hallo** (Dutch), **Choum Reap Sour** (Cambodia), **Geiá sou** (Greek), **Mbote, Jambo** (Congolese), **Konnichiwa** (Japanese), **Hola** (Spanish)

## TE TOTARA PRIMARY SCHOOL BOARD OF TRUSTEES LETTER TO OUR COMMUNITY

On behalf of the newly appointed Board of Trustees, I would like to thank the community for appointing and instilling your confidence in us.

There is a great mix of existing and new trustees allowing for a seamless transition. This coupled with an injection of new thinking, skills, backgrounds and enthusiasm has truly set the Board up well for the next era of Te Totara Primary School's journey.

I would like to thank the outgoing Board members who stood down this year; Nhung Mayo, Andrew Hall and Megan Campbell for their wonderful contribution making our school what it is today, and wishing them all the very best for their future endeavours.

The new Board has had its first meeting where we received a stunning Social Science Curriculum Report from Anne Fraser, it was pleasing to see the progress being made by students. This report is available on our school website [www.tetotara.school.nz](http://www.tetotara.school.nz) under the tab "Our Learning" then "Curriculum Reports".

Board Member "Portfolios" were discussed and appointed to individuals as follows:

Portfolio	Name
Chairperson	Kevin King
Deputy Chairperson	Rod Carpinter
Property	Iain Ings
Human Resources	Rod Carpinter
Policies & Procedures	Anne Fraser & Erika Pearson
Whanau	Brian Sheedy & Erika Pearson

Project Control Group Chair	Iain Ings
Finance	Tracey Bremner

Notes:

- Portfolios are valid for 12 months, rotation is encouraged to build resilience and depth within the Board.
- Iain Ings advised he wishes to step down from the Role of Chairperson this year to focus on the property portfolio.

Your Board's Focus this year:

- Continuing to focus on growing from a medium-size primary school to a large school while maintaining a culture of ...
  - Inclusiveness
  - Individualised learning programmes
  - Maintaining the high standard of education and holistic growth
  - Continuing to attract and grow top talent across our teaching community to assist with our strategic goals and intent
  - High quality buildings and resources to support student achievement

Kind Regards

*Kevin King*

**Te Totara Primary School Board of Trustees  
Chairperson**

### OUTDOOR EDUCATION TRIPS AT TE TOTARA

A number of our teams are going on Outdoor Education experiences shortly. Our teachers have been really proactive in providing relevant and purposeful experiences for the children that support their learning. Some FAQ's that might help:

#### WHY DO WE GO?

Outdoor Education experiences are used to support learning activities and are relevant to the curriculum.

#### APPROVAL

Each trip is approved by the Principal and must meet safety requirements. This is done through a risk assessment (RAMS) and is completed beforehand. This involves staff researching, assessing risks and planning for them. Also we look at medical support for children and always have cell phones for contact.

#### TRANSPORT

Our preferred transport for large trips is by Bus. This is a safe way to travel. We ensure that Buses comply with all relevant requirements. We endeavour to keep costs to an affordable level for Parents and often subsidise the trips to allow this to happen. Please contact the Principal if you have any concerns in this area.

## LEARNING PLAN DISCUSSIONS LAST CHANCE TO BOOK

Learning Plan discussions will take place on **Wednesday 14th & Thursday 15th August, 2013**. To make an appointment time for your child/ren, please use our online booking system [www.schoolinterviews.co.nz](http://www.schoolinterviews.co.nz) – our school code is **NNXDL**. You can also access this site via our school website [www.tetotara.school.nz](http://www.tetotara.school.nz). If you are unable to access a computer, please phone Marise in the School Office on (07) 853-0039 ext. 858 to make a convenient time.

**Bookings close tomorrow, Friday 9th August @ 3.00pm**

**We will not be able to accept bookings after 3.00pm on Friday 9th August 2013.**

### PLEASE NOTE:

- If your child is in [Earth 18, Learning Plan Discussions](#) will be staggered over 4 days:  
Wednesday 14th August  
Thursday 15th August  
Wednesday 21<sup>st</sup> August (from 3.15pm)  
Thursday 22<sup>nd</sup> August (from 3.15pm)  
**To book, please follow the above instructions**

### SCHOOL FINISHES EARLY FOR LEARNING PLAN DISCUSSIONS

The whole school will finish at **2.00pm** on **Wednesday 14th August & Thursday 15th August**; students will need to be collected by parents/caregivers at **2.00pm** please. After School Care will begin at 2.00pm for those children enrolled at After School Care.

### AFTER SCHOOL CARE LEARNING PLAN DISCUSSIONS

If your child is enrolled in After School Care and is booked in on Wednesday 13<sup>th</sup> & Thursday 14<sup>th</sup> August, they will AUTOMATICALLY be booked in for the earlier booking time of 2.00pm to their usual book out time, unless OTHERWISE advised

**Please note: We will not be able to take any extra bookings for these two days due to exceptionally high numbers.**

### 1ST SCHOOL FESTIVAL 28TH MARCH, 2014

The PTA, in conjunction with the whole school, are looking at having a **Gala Festival** early next year to commence what would no doubt be one of the most significant ventures in the school's calendar. The school has reached a level of growth and critical mass whereby our Principal, Brian Sheedy, feels we can host this event in a manner which will show off the wonderful and diverse range of talents

the students offer, to rub shoulders with our local community and to enjoy some of the wonderful food our diverse range of cultures and ethnicities represent. It will also be an important fundraising event that is likely to 'seal the deal' in terms of raising the final amount of funds required for the school to purchase a swimming pool early next year in conjunction with funds raised to date and community grants.

The event itself will require a vast degree of help and people resource to make it happen and this is the first in a series of trumpet calls for all parents and friends to offer their help and service in any way or capacity you are able. Some of the areas (but by no means limited to these areas) are parking and logistics, marketing, games/activities, food stalls, entertainment, raffles, banking etc.

**At our PTA meeting TONIGHT, Thursday 8th August @ 7.30pm most of our time will be used to start to develop frameworks around the event and utilise peoples skills and willingness to be a part.**

Please feel free to email me to discuss further

Many thanks,

Ryan Hamilton – [ryan@bugoff.co.nz](mailto:ryan@bugoff.co.nz)

Chairperson PTA

### SCHOLASTIC BOOK ORDERS

Scholastic Book Club orders are due back to the School Office by **9.15am tomorrow, Friday 9th August 2013**. **No late orders will be accepted.**

### FULL SCHOOL ASSEMBLY TOMORROW

This week's assembly will be held **Friday 9th August @ 2.00pm** in the Matariki Hall and stars our **Milky Way 6 Children**. Everyone is welcome.

This week the **Marama** Team is rostered off assembly.

### TE TOTARA SPORTS

#### PLAYER OF THE DAY

##### HOCKEY

<b>Cheetahs</b>	Brooke Manderson
<b>Lightening</b>	Lyrik Johnson
<b>Tigers</b>	Cam Hopping, Emma Foy
<b>Thunder</b>	TBA

##### NETBALL

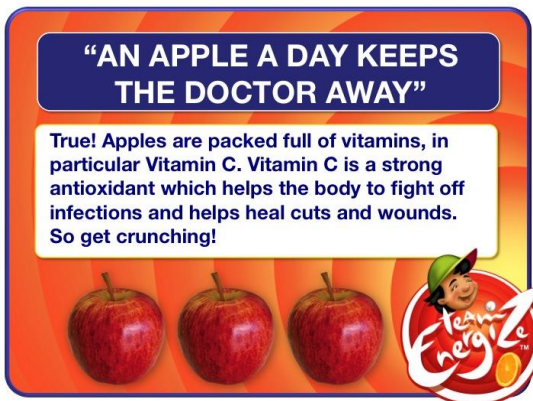
<b>Comets</b>	
<b>Ferns</b>	Emma Timmo, Jaymee Frater
<b>Magic</b>	Sophie Clay
<b>Tigers</b>	TBA

## DATES COMING UP

- Fri 9 Aug** 3.00pm Bookings Close  
for Learning Plan Discussions
- Tues 13 Aug** Maths ICAS Exam
- Wed 14 Aug** Learning Plan Discussions 2.15pm-5.30pm  
**School Finishes at 2.00pm today**
- Thurs 15 Aug** Learning Plan Discussions 2.15pm-7pm  
**School Finishes at 2.00pm today**
- Tues 27 Aug** Selected Yr 4-6 children to Fairfield  
Cluster Cross Country
- Thurs 29 Aug** Postponement date for Fairfield Cluster  
Cross Country
- Fri 27 Sept** 3.00PM END OF TERM 3

## Brian Sheedy

Principal



## TE TOTARA PTA

**NEXT MEETING TONIGHT**  
**THURSDAY 8<sup>th</sup> AUGUST, 2013**

In The Staff Lounge at School 7.30pm. Everyone is welcome.

### ENTERTAINMENT BOOKS - \$60.00 EACH

Entertainment Books - \$60 each

**Books or payment are now overdue.** If you have any queries or you wish to purchase extra books, please contact Kristy MacIntyre on 021 440 016 or [rigmac@orcon.net.nz](mailto:rigmac@orcon.net.nz).

### 2013 TE TOTARA SCHOOL DISCO

Date Confirmed: Friday 1 November 2013

**THEME IDEAS WANTED!!**

There is now a box in the office for your children to enter their theme ideas. There will be a prize for the chosen theme. Themes need to be in the box by Friday 16<sup>th</sup> August 2013. If you would like to be on the sub-committee to help with organising this event please email Jolie by Friday 9<sup>th</sup> August at [jolie.hopping@vodafone.co.nz](mailto:jolie.hopping@vodafone.co.nz).

If you would prefer just to help on the night, let me know also. Note we will need at least 20 helpers per session (the disco will be run in two sessions split by year levels) and if we do not get enough helpers the event will not be able to go ahead. It is heaps of fun and even if you can only spare 10 minutes it all helps.



## PTA BANK ACCOUNT DETAILS:

Name: Te Totara Primary School PTA  
Bank: SBS Bank  
Account: 03-1355-0711498-00  
(please ensure your child's name and class are used as a reference)  
E-mail: [tetotara.pta@gmail.com](mailto:tetotara.pta@gmail.com)  
<http://www.facebook.com/pages/Te-Totara-Primary-School-PTA/30090011661692>



## COMMUNITY NOTICES:

We are often asked to put Community Notices in our newsletter. Due to the large number of requests, we now have a "Community Notices" section on the notice board in the School Office, where you will find more information on the notices below. Please note that this does not necessarily imply School endorsement of these notices.

### TERM 3 CHILDREN'S POTTERY CLASSES AT THE WAIKATO SOCIETY OF POTTERS

Please e-mail Trish at [manager@waikatopotters.co.nz](mailto:manager@waikatopotters.co.nz) or call 838-1950 if you wish to enroll your child/children.

**GORDONTON COUNTRY MARKET**  
EST. 1982

**FRESH PRODUCE**  
**GOURMET FOOD**

**HANDMADE FRESH GROUND COFFEE**  
**LOCAL COMMUNITY DEVONSHIRE TEA**

**LIVE MUSIC**  
**FRESHLY BAKED**

**HOMEGROWN GIFTS**  
**CRAFTS**  
**DESIGNER VARIETY**

**WWW.GORDONTONMARKET.CO.NZ**

**2<sup>ND</sup> SATURDAY OF EVERY MONTH**

**MARKET SATURDAY 8.30AM - 1.00PM**  
Oaks Christian Centre

**PROUDLY SUPPORTED BY**  
GORDONTON DISTRICT COMMITTEE, VIVID IMAGES, & So Subtractive Design

**The Girl on the Swing**  
**TIN HIRE**

Tin hire is now available from:

The Girl on the Swing  
Phone: 07 855 4107  
[www.facebook.com/TheGiriontheswing](http://www.facebook.com/TheGiriontheswing)  
6 Aquila Crescent Rototuna

**ALSO DECORATING SUPPLIES & EDIBLE IMAGES**

**AEROBICS CLASS**

For Adults held at Te Totara Primary School on Monday nights at 7.30pm. Heaps of fun and great workout. Email Jolie at [jitterbugs@vodafone.co.nz](mailto:jitterbugs@vodafone.co.nz) for a free trial.

**PEACHGROVE INTERMEDIATE OPEN DAY 2<sup>ND</sup> SEPTEMBER 2013**

Parents and Year 6 students are warmly invited to attend an open day session and Information Evening.

All enquiries are welcome, [www.peachgrove.school.nz](http://www.peachgrove.school.nz).

Enrolments for 2014 are being accepted now, Phone 8557 596.

**WEL NETWORKS MOOLOO OPEN DAY**

Sunday 11<sup>th</sup> August 2013

10am-12pm Hamilton Old Boys Training Shed

Meet the Waikato Itm Cup Team.

**EARTHCARE ENVIRONMENTAL KIDS MARATHON**

Sunday 6<sup>th</sup> October 2013, more details

[www.hamiltonhalfmarathon.org.nz](http://www.hamiltonhalfmarathon.org.nz)

Entries close 20<sup>th</sup> September 2013.

**ADVICE ON POTENTIALLY CONTAMINATED INFANT FORMULA**

If people have any health concerns they should call Healthline on 0800 611 116 or Plunketline on 0800 933 922 for advice.