

Kia Ora (Maori/NZ), Hello (English), Bula (Fijian), Welkom (South African), Huān yíng (Chinese-Mandarin), Ayubowan, Vanakkam (Sri Lankan), Namaste (India), Bem-vindos (Brazil), Marhaba (Arabic), Hallo (Dutch), Choum Reap Sour (Cambodia), Geiá sou (Greek), Mbote, Jambo (Congolese), Konnichiwa (Japanese), Hola (Spanish), Annyeonghaseyo (South Korea) Israel Shalom (Hebrew), Salām (Muslim)

## \*\* SCHOOL HOLIDAYS \*\*

**MONDAY 14TH APRIL TO FRIDAY 25 APRIL, 2025**

*The School Office will be open on Thursday 24th April, 2025  
from 9.00am - 2.00pm for Enrolment enquiries*

**Term 2 begins on Monday 28th April at 8.55am**

## PRINCIPAL'S MESSAGE

Tihei mauri ora, nau mai, haere mai, tena koutou katoa, E nga whanau, e nga kaiako, e nga tamariki, e nga manuhiri, tena koutou, tena koutou, tena koutou katoa



Kia Ora Whānau,

The school term is flying by. Next week we welcome the Education Review Office to Te Totara. We look forward to sharing all the wonderful learning with them as they spend 3 days with us.

Last week we had our second School Board meeting for the year and there were a number of items discussed. We have a new system for reviewing School Policies & Procedures. It is called SchoolDocs and will be linked onto our school website. This is where anyone can check all of our schools Policies & Procedures and provide feedback when they are up for review. Soon you will see a link on our school website, you can use: Username: **tetotara** and password: **totara**

Thank you to all the families that have helped us with making their children's lunch boxes full of good healthy foods so they can learn. With the bell changes and food breaks we have seen an increase in a number of children making the most of the eating breaks. Thankyou for your continued support of this.

Unfortunately, we have seen an increase in chewing gum and lollies at school which are outside of school lunches. Could you please remind your children that lollies and chewing gum are not a good source of energy for school. These food items are for home.

The pick-up area at the front of the school is a busy place and we thank our community for their patience. If your child is taking a while to get to you, please move on and go around again or park in the carpark as this will help to ease the congestion. We ask that all the children who cross over to the other side, come to the crossing for safety. Please do not make a 3rd lane, it is too dangerous.

I want to thank all those families that email informing us of any leave. It is vital we know so we can put the correct codes in our Attendance Register. The Ministry of Education asks schools to send letters to families when their child's attendance is lower than 90%, which is classed as regular attendance at school. We understand there are many reasons for absence and we are just following a process set out so please make contact if you have any queries.



*James Murray*  
Principal

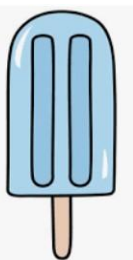
## MATHS CURRICULUM TEACHER ONLY DAY - TUESDAY 3RD JUNE, 2025

As part of the implementation of the new Maths Curriculum the Ministry of Education has allocated 2x Teacher Only Days in 2025 for schools to provide Professional Development to their staff in the area of Maths education.

Te Totara will be holding our ***first Maths Teacher Only Day on Tuesday 3rd June***. We will be working with Bruce Moody around the changes that have been made in the curriculum throughout this day.

To confirm... School will be **CLOSED** on the following dates:

- **Friday 30th May** for our annual Te Pae Here Teacher Only Day
- **Monday 2nd June** is King's Birthday Public Holiday
- **Tuesday 3rd June** Maths Curriculum Teacher Only Day



## NEXT ICE BLOCK DAY - FRIDAY 11TH APRIL, 2025

PTA's next Ice Block Day will be on Friday 11th April (last day of Term). Please don't forget to provide a \$2.00 coin to your children to enjoy the yummy treat.



## TE TOTARA WINTER SPORTS TEAMS - COACHES/MANAGERS

As the winter sports season approaches, we're reaching out to invite you to step up as a Coach or Manager for one of our school's Hockey, Netball or Miniball teams.

This is a fantastic opportunity to get involved, support our kids, and help them grow both on and off the field. No prior experience is required - just a willingness to encourage teamwork, build confidence, and have some fun along the way!

Your involvement can make a real difference in their enjoyment and success, while creating lasting memories for you and your family.

If you're interested or want to learn more, please let us know - we'd love to have you on board! Email Niki Collins: [nikic@tetotara.school.nz](mailto:nikic@tetotara.school.nz) OR sign-up through your child's KINDO registration.



## FUTUREFERNS COACHING (Netball)

Are you coaching a futureFERNS team this year and are unsure of where to begin? These workshops will give you the tools you need to be a great futureFERNS coach this season.

futureFERNS netball is fun and engaging, you don't have to have previous experience to coach a team! Anyone can be a coach. When:

- Year 1-2: Thursday 10th April 6pm-8pm or Tuesday 29th April 6pm-8pm
- Year 3-4: Tuesday 8th April 6pm-8pm or Saturday 3rd May 9am-11am
- Year 5-6: Wednesday 9th April 6pm-8pm or Saturday 3rd May 12pm-2pm

Cost: FREE For more information or to register: [CLICK HERE](#)



## 2025 FEES, SPORTS REGISTRATIONS & DONATIONS PAID VIA KINDO

This online system allows you to pay for our school's fees (Mathletics/Mathseeds, Voluntary School Donation, Lost Library Book Costs etc) and is also the ONLY way to register/pay for your child for sports teams.

**Please Note:** Aquatics will be charged after your child's class has had their lessons. ALL other 2025 fees have now been loaded to your child's KINDO account



Available to pay/register via KINDO now:

- **Miniball (Years 5&6 only) - Cut-off date Friday 11th April @ 1.00pm**
- **Aquatics** (added to your KINDO account when your child's class is swimming)
- **Voluntary School Donation** (\$120.00 first/only child / \$60.00 each sibling)
- **Mathletics/Mathseeds**



*Invoices will be emailed to families this week, we thank you for your support!*

**\*\*\* PLEASE NOTE: If you do not receive confirmation from KINDO you have "successfully registered", then you have not completed the sign-up process. Your item may still be in your cart, please ensure you complete the process \*\*\***

*Kindo Questions?* Kindo Helpdesk on 0508 454636 (toll free)

*If access is denied, it is most likely that our school does not have your current email address recorded on your child's file. Please do not hesitate to contact the School Office on (07) 853-0039 to amend.*

### Voluntary School Donation - what is it used for?

2025	Voluntary School Donation - Full Year (eldest or only child)	\$120.00 GST exempt
2025	Voluntary School Donation Sibling - Full Year	\$60.00 GST exempt



We want to provide our children with the full benefits of extensive resources, additional learning programmes and special opportunities that we can all be very proud of. This can only be achieved with your help and support.

School Donation funds are used to purchase additional sports gear, reading resources, library books, music, art equipment and helps subsidise our swimming programme.

The voluntary school donations are currently set at \$120.00 for the first or only child and \$60.00 for the second and subsequent children. There has been no increase in our school donation since 2016. School donations are voluntary, but we would be highly appreciative of any payments.

This donation is tax deductible and a 1/3 can be claimed back from the IRD. The IR526 form is downloadable from the IRD website.

**Click Subscribe for notifications!**

You can find the link on our website or for the latest episode click here [TT TV Week 8, Term 1 2025](#)

## HEALTH AND PHYSICAL EDUCATION CONSULTATION 2025

Thank you to all the families that took the time to complete the 2025 Health & PE Consultation Questionnaire. The feedback was presented to the Te Totara School Board at the March meeting. Your input into this important curriculum area is very much appreciated and valued.

Ngaa mihi  
Jo Stewart

### OUT-OF-ZONE ENROLMENTS FOR 2025

Enrolment at the school is governed by an enrolment scheme, details of which are available on our school website [www.tetotara.school.nz](http://www.tetotara.school.nz)

The Board has determined the following places are likely to be available to OUTZ students from Term 3, 2025 onwards. Enrolment period: **28th June - 17th December 2025:**

**20 places for Year 0 students** (whose 5th Birthday falls within the above enrolment period)

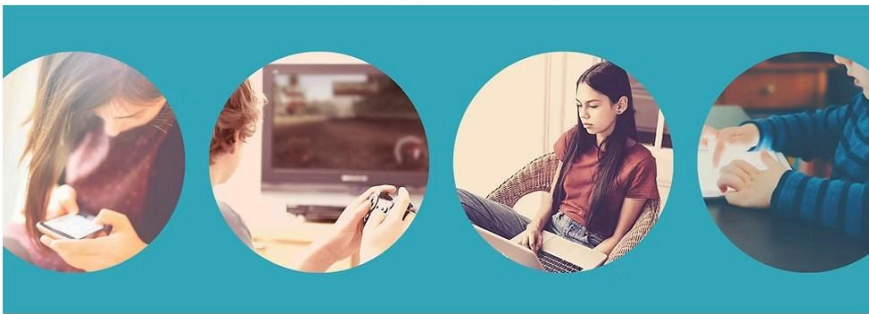
The exact number of places will depend on the number of applications received from students who live within the school's home zone.

For students seeking enrolment within the above enrolment period, the deadline for receipt of OUTZ applications is **1.00pm on Friday 11th April, 2025** and should be emailed to:

[receptionist@tetotara.school.nz](mailto:receptionist@tetotara.school.nz)

Please visit our school website [www.tetotara.school.nz](http://www.tetotara.school.nz) under "Out-of-Zone Enrolments" for further information. Click the red link: [OUTZ Enrolment Form](#)

## Our Kids Online



Resources for Schools, Parents & Organisations to help keep kids safer online & increase emotional wellbeing

## 2 Minute Parenting Tips and Tricks!

### PlayStation VS Cards?

Playing cards with your child isn't just a game—it's a powerful moment of connection.

While a PlayStation offers distraction, a deck of cards invites eye contact, laughter, and presence. It taps into a child's deepest psychological need: to feel seen and valued.

Every shuffle, every shared win or loss, builds emotional intelligence, resilience, and trust. These are the moments that shape secure attachments and lasting memories—far more rewarding than any digital high score.

When you sit across the table, you're not just playing a game—you're saying, you matter to me.

Click the link to see more: <https://www.youtube.com/watch?v=Ue87SeaQkUg>

## NO SCOOTERS OR BIKES TO BE RIDDEN WITHIN THE SCHOOL GROUNDS

A reminder to everyone to please get off your scooter/bike **before** entering our school grounds. There have been some near misses, both with adults and children, riding electric scooters, normal scooters and bikes through our school grounds. So..... we ask everyone to **please walk your scooter/bike inside our school grounds**. This rule is for everyone's safety. Also, safety helmets must also be worn at all times.



## NO PARKING ALLOWED AT LEARNING LINKS, HECTOR DRIVE (Opposite the School)

Learning Links, our wonderful preschool neighbour across the road has asked for our help as their families are having difficulties finding a carpark in their car park at times.

It appears that a number of our parents and caregivers who don't have children at the centre have been parking in the Learning Links car park during pick up times.



**NO PARKING**

**PLEASE DO NOT park in their car park, unless you have a preschool child from Learning Links to pick up.**

Learning links car park is **ONLY** for families who have preschool children at Learning Links.

*We support the staff at Learning Links monitoring this, you will be asked to move if you are found to be parking in their premises without the above reason. Please be respectful of this request.*

*Thank you for your understanding and cooperation. We very much value the great relationships we have fostered with our neighbouring community organisations.*



## LEAVING TE TOTARA PRIMARY SCHOOL AT THE END OF THE TERM?

If your child/ren are leaving our school at the end of this term, please email Marise Crow at: [receptionist@tetotara.school.nz](mailto:receptionist@tetotara.school.nz) advising of the school you have enrolled at for Term 2. We will make arrangements to forward your child's Student Records directly to that school.

## SCHOOL ASSEMBLIES - MATARIKI HALL

School assemblies will be held **in the Matariki Hall at 2.00pm every Friday.**

**Fri 4 April** Neptune and Marama Pods - **Marama 13 is sharing**  
**Fri 11 April** Matawhero, Earth & Milky Way - **Milky Way 21 is sharing**



## DATES COMING UP

**Wed 9 April** PTA - Online Meeting @ 7.00pm  
**Fri 11 April** PTA Ice Block Day  
**Fri 11 April** END OF TERM 1, 2025 @ 3.00pm

**Mon 28 April** TERM 2 BEGINS  
**Fri 23 May** PTA Disco - Winter Wonderland (more details to follow)  
**Fri 30 May** TEACHER ONLY DAY - **SCHOOL CLOSED**  
**Mon 2 June** KINGS BIRTHDAY PUBLIC HOLIDAY - **SCHOOL CLOSED**  
**Tues 3 June** TEACHER ONLY DAY (MATHS) - **SCHOOL CLOSED**  
**Wed 18 June** Junior School Production - 2.00pm & 6.00pm Performances  
**Thurs 19 June** Junior School Production - 2.00pm & 6.00pm Performances  
**Thurs 26 June** Board Meeting @ 6.30pm

# TE TOTARA PTA NEWS

EMAIL: [pta@tetotara.school.nz](mailto:pta@tetotara.school.nz) [www.facebook.com/TTPTA](http://www.facebook.com/TTPTA)

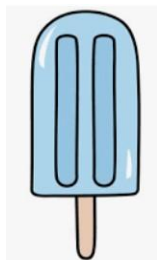
Please 'like' our Facebook page to ensure you keep in the news loop: [www.facebook.com/TTPTA](http://www.facebook.com/TTPTA)



## PTA - WHAT DO WE DO?

As the name suggests we are the Parents & Teachers Association (PTA) and we help organise events and raise funds that we donate to the school for various causes. Some of our events include, but are not limited to School Discos, Ice-Block Days, Spellathons etc. We have donated these funds to the school to help with the obstacle course, school camps and various other events. If you feel motivated and want to make a difference while you meet a bunch of cool parents, please come and join us at the next PTA meeting!

NOTE: Next PTA meeting timings attached.



## NEXT ICE BLOCK DAY - FRIDAY 11TH APRIL, 2025

PTA's next Ice Block Day will be on Friday 11th April (last day of Term). Please don't forget to provide a \$2.00 coin to your children to enjoy the yummy treat.

## ENTERTAINMENT MEMBERSHIP

An Entertainment Membership is an easy-to-use App packed full of incredible savings of up to 50% off and 2-for-1 offers, so you can save on takeaways, dining, shopping, gift cards, activities and more!

**NZ - FREE Multi City Upgrade 6:00pm NZDT 31/3/2025 - 1:59pm NZDT 1/5/2025**

If you use the link below, 20% of every membership purchased is donated back to support Te Totara Primary School PTA:

<https://subscribe.entertainmentnz.com/fundraiser/15502m5>

**We thank you for your continued support.**

## PTA MEETING

Our next PTA meeting will be held **online on Wednesday 9th April at 7.00pm**. A link to join will be sent out closer to the time. All parents and guardians are welcome to join.

**Your PTA Committee:**

*Navreet, Kerry, Garima, Lorinda, Nate & Alexx*

An advertisement for the Entertainment NZ app. It features a smartphone displaying the app interface on the left. On the right, there are three callout boxes with arrows pointing to the app: '12 months value ONLY \$70', 'Over 15,000 valuable offers', and 'Up to 50% off dining, experiences and travel!'. At the bottom, there is a 'Find out more' button. The background shows a family (a woman and a child) looking at a globe, suggesting travel and family adventures. Text at the top reads 'School Holiday Fun for Less! Save Big on Family Adventures' and 'Discover more with a Free Multi City Membership Upgrade\*'. A small note at the bottom left says '\*When you purchase a Single City Membership.'"/&gt;

# COMMUNITY NOTICES:

We are often asked to put Community Notices in our newsletter. Due to the large number of requests, we now have a "Community Notices" section on the notice board in the School Office, where you will find more information on the notices below. **Please note that this does not necessarily imply School endorsement of these notices**



**The Highland Hustle! A day to celebrate and engage in some Celtic themed fun. Clan v Clan, we will show off our might and become victorious.**

*Some activities may need to be swapped for other exciting ones. Go online to check out a full up-to-date timetable for your venue*

BOOK ONLINE AT



**KELLYSPORTS.CO.NZ**



HCS PREM NETBALL TEAM PRESENTS

# NETBALL TRAINING SESSIONS

with the support of their coaches

## 15 & 16 April

HOW DO I SIGN UP?

CLICK ON THE LINK TO FILL  
IN THE GOOGLE FORM.

[SIGN UP LINK](#)

OR



@SportsCamps4Kids



# RUGBY HOLIDAY PROGRAM

**22 APRIL & 23 APRIL**  
**HAMILTON MARIST**  
147 OLD FARM ROAD, HAMILTON

**\$60 PER DAY**

**22 APRIL & 23 APRIL**  
**HAUTAPU SPORTS CLUB**  
8 LAURENT ROAD, CAMBRIDGE

- ◆ Boys & girls ages 5 - 13
- ◆ All abilities welcome
- ◆ Skills and drills
- ◆ Team building
- ◆ Rippa and Touch games



**TIME:**  
**DROP OFF FROM 8:30AM**  
**START TIME 9AM**  
**FINISH 2:30PM**  
**PICK UP BY 3PM**

Register at [sportsamps4kids.co.nz](http://sportsamps4kids.co.nz)






**8 Weeks of FUN!**

TT Kidz (NZ) gives children aged 6-11 a great first experience in table tennis.

**REGISTER NOW!**




**TT Kidz - Waikato**

Venue: Waikato Table Tennis Stadium, Edgecumbe Park, Edgecumbe Street, Whitoria, Hamilton, 3200  
 Start Date: Saturday, starting 10th May 2025  
 Time: 10am to 11am  
 Cost: \$100 (new participant) or \$60 returning participant (Already have equipment pack)

Equipment pack included!  
T-shirt, Bag, Bat and balls.



[www.tabletennis.org.nz/tt-kidz](http://www.tabletennis.org.nz/tt-kidz)



\* A fun, social Chess Tournament open to all players ... ages 4 to 18  
 \* 6 games at 15 mins per player  
 \* Five divisions - suits all player levels  
 \* Lots of fun activities, puzzles and our **FAMOUS LOLLY SCRAMBLE!!**

presented by

# THE SARAPU CUP

Venue  
Berkley Normal Middle School

Date  
Sunday 6 Apr 2025


Time  
1:00pm - 5:30pm

Location  
26 Berkley Avenue  
Hillcrest

Entry fee  
**\$33 per player**

Enter Online [www.chesspower.co.nz](http://www.chesspower.co.nz)  
Click Events, Upcoming Events

**PERFECT FOR BEGINNERS!**



**HAMILTON**





**Poipoia**  
te Manawa

# Year 3-6 Skill Camp

WWW.NETBALLHAMILTON.ORG.NZ




The April School Holidays are just around the corner, which means we are running our Poipoia te Manawa Skill Camps!

This is the perfect opportunity to learn new skills or develop existing skills before the season kicks off.

Year 3-4: Tuesday 15th April and/or Wednesday 23rd April

Year 5-6: Thursday 17th April and/or Thursday 24th April

Cost: \$50.00 per day

The camps run from 9:00am - 3:00pm each day and will be held at the Hamilton City Netball Centre.



# GIRLS JUST WANNA KICK!

**YOUTHTOWN**  
SINCE 1932



14th - 17th April 8.30am - 3.30pm  
AGE: 7-15



COST: \$20 PER DAY

Horsham Downs Hall, 6 Martin Lane

[www.youthtown.org.nz](http://www.youthtown.org.nz) | @youthtownnz | 0800 004 566

